

1000LED INC

p: 877-340-1700

c: 214-597-4288

a: 2965 Congressman Lane

a: Dallas TX 75220 USA

w: www.1000LED.com

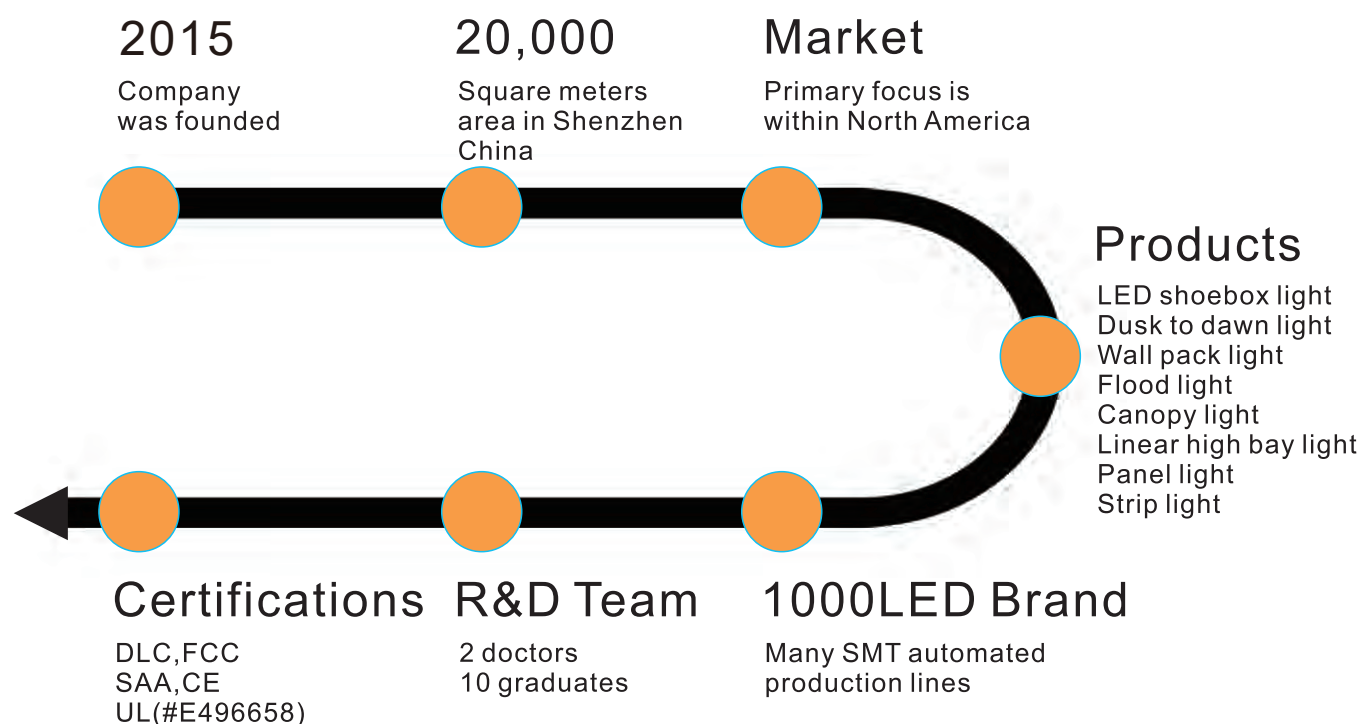
e: info@1000led.com



2019

ABOUT US

about:



Certifications



CONTENTS

GEN2 Shoebox Lights	page.03
Installation Hardware	page.05
Dusk To Dawn Lights	page.07
Wall Pack Lights	page.09
GEN2 Flood Lights	page.15
Slim Canopy Lights	page.17
Linear High Bay Lights	page.19
UFO High Bay Lights	page.20
Flat Panel Lights	page.21
Strip Lights	page.22



100/150/200W LED Shoebox Light

Model: 1L-10WSB27-50K-D-T3
1L-15WSB27-50K-D-T3
1L-20WSB27-50K-D-T3

Power: 100W/150W/200W Luminous Flux: 15658/22500/30000LM

PF: >0.95 CRI: Ra>70

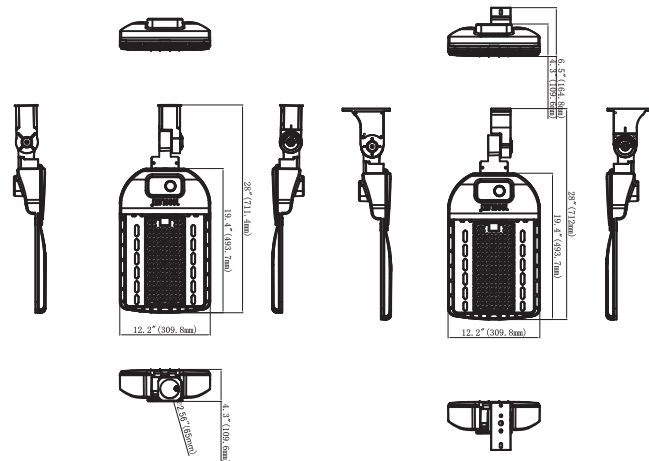
- ▶ L70: >100,000 hrs
- ▶ Input Voltage: AC120~277V or AC200~480V
- ▶ Protection Level: Wet Location/IP66
- ▶ Lighting Angle: Type II, Type III, Type IV, Type V



Dimension

Unit: inch/mm

100/150/200W (Slip Fitter Mount) 100/150/200W (Arm Mount)



300W LED Shoebox Light

Model: 1L-30WSB27-50K-D-T3

Power: 300W Luminous Flux: 45000LM

PF: >0.95 CRI: Ra>70

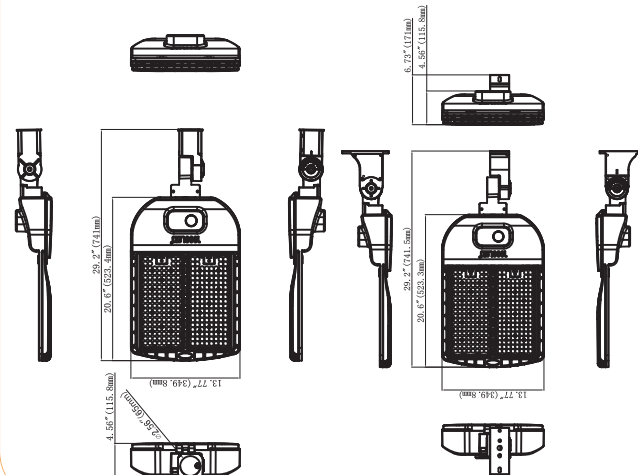
- ▶ L70: >100,000 hrs
- ▶ Input Voltage: AC120~277V or AC200~480V
- ▶ Protection Level: Wet Location/IP66
- ▶ Lighting Angle: Type II, Type III, Type IV, Type V



Dimension

Unit: inch/mm

300W (Slip Fitter Mount) 300W (Arm Mount)



Standard



body

+



(slip fitter / arm / trunnion is optional)

Option 1



body

+



slip fitter

+



photocell

Option 2



body

+



arm

+



photocell

Option 3



body

+



trunnion

+



photocell

Option 4



body + (motion sensor/slip fitter/arm/trunnion is optional)

Option 5



body

+



slip fitter

+



light node

+



gateway

Option 6



body

+



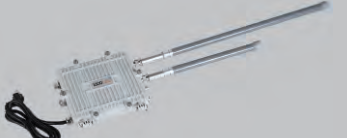
arm

+



light node

+



gateway

Option 7



body

+



trunnion

+



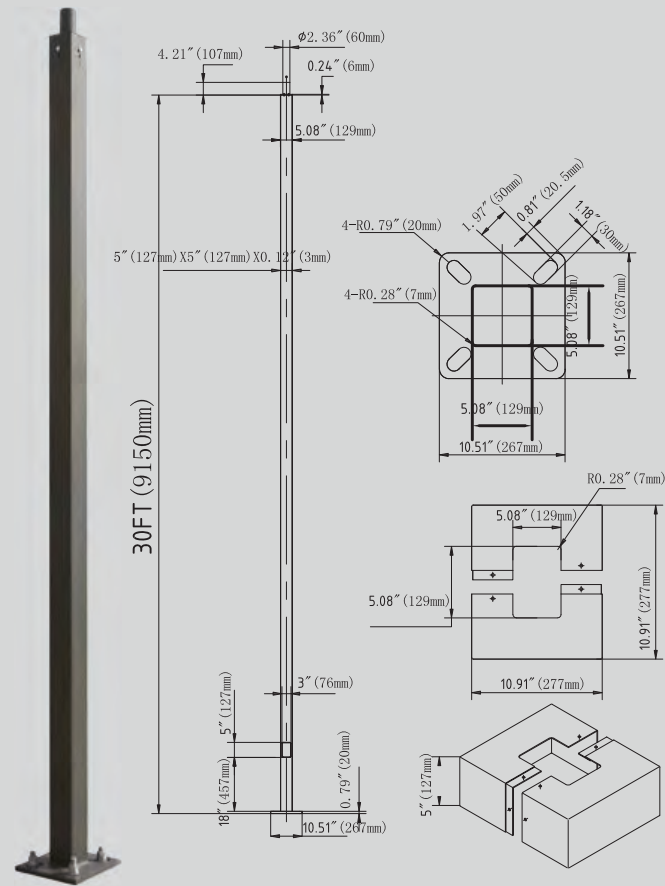
light node

+



gateway

Installation Hardware



- ▶ 10 FT 4" SQUARE MODEL: 1L-10FT4-11G-D-T
- ▶ 15 FT 4" SQUARE MODEL: 1L-15FT4-11G-D-T
- ▶ 20 FT 4" SQUARE MODEL: 1L-20FT4-11G-D-T
- ▶ 25 FT 4" SQUARE MODEL: 1L-25FT4-11G-D-T
- ▶ 30 FT 5" SQUARE MODEL: 1L-30FT4-11G-D-T

Conforms to ASTM-A500 Grade B: Minimum Yield Strength of 46,000PSI.

Textured Architectural Bronze Powdercoat Finish, Baked to Ensure Maximum Paint Adhesion, Hardness and Durability.

Anchor Bolts are Included, Sized Based on Pole Data Charts for the Selected Pole Size. .

Cast Iron Reinforced Hand Hole and Cover with Ground Screw.

Poles are Provided With a Two-Piece Formed Steel Base Cover that is Easily Assembled and Fitted Over Pole Base

Poles are Available in Standard Lengths as Shown in the Order Matrix.
Poles can be Custom Cut to Order. Consult Factory.

Standard Length Poles Include 2" OD Tenon, Side Drilled 4@90 Degrees, Polycarbonate Top Cover and Hole Plugs for Unused Drilling Locations.

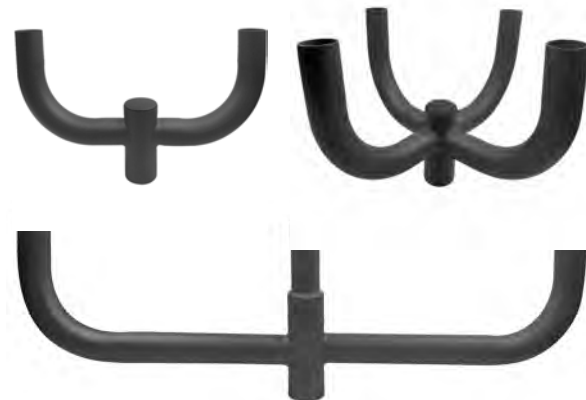
Tenon Adapters



Spoke Adapters



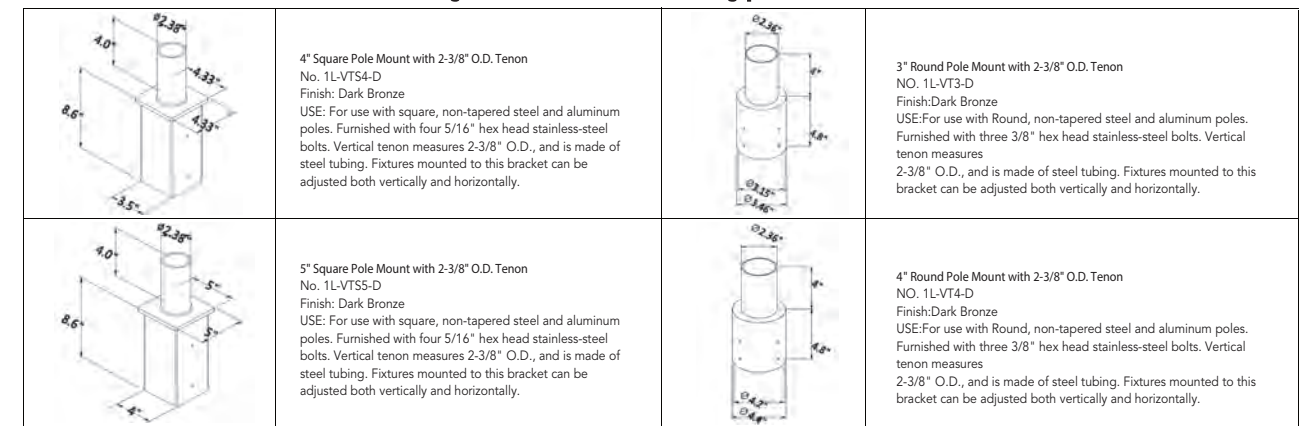
Bulldozers



Installation Hardware

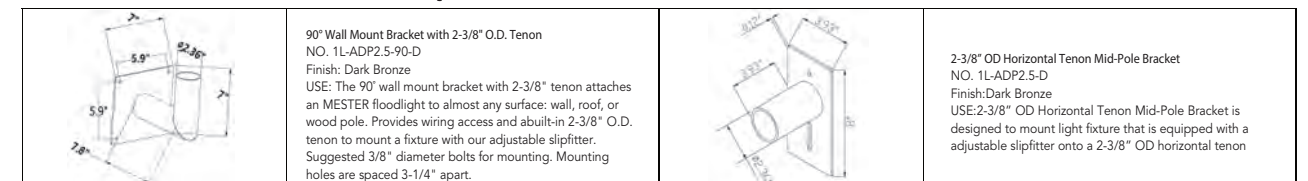
POLE BRACKET

- **For mounting one fixture on an existing pole**



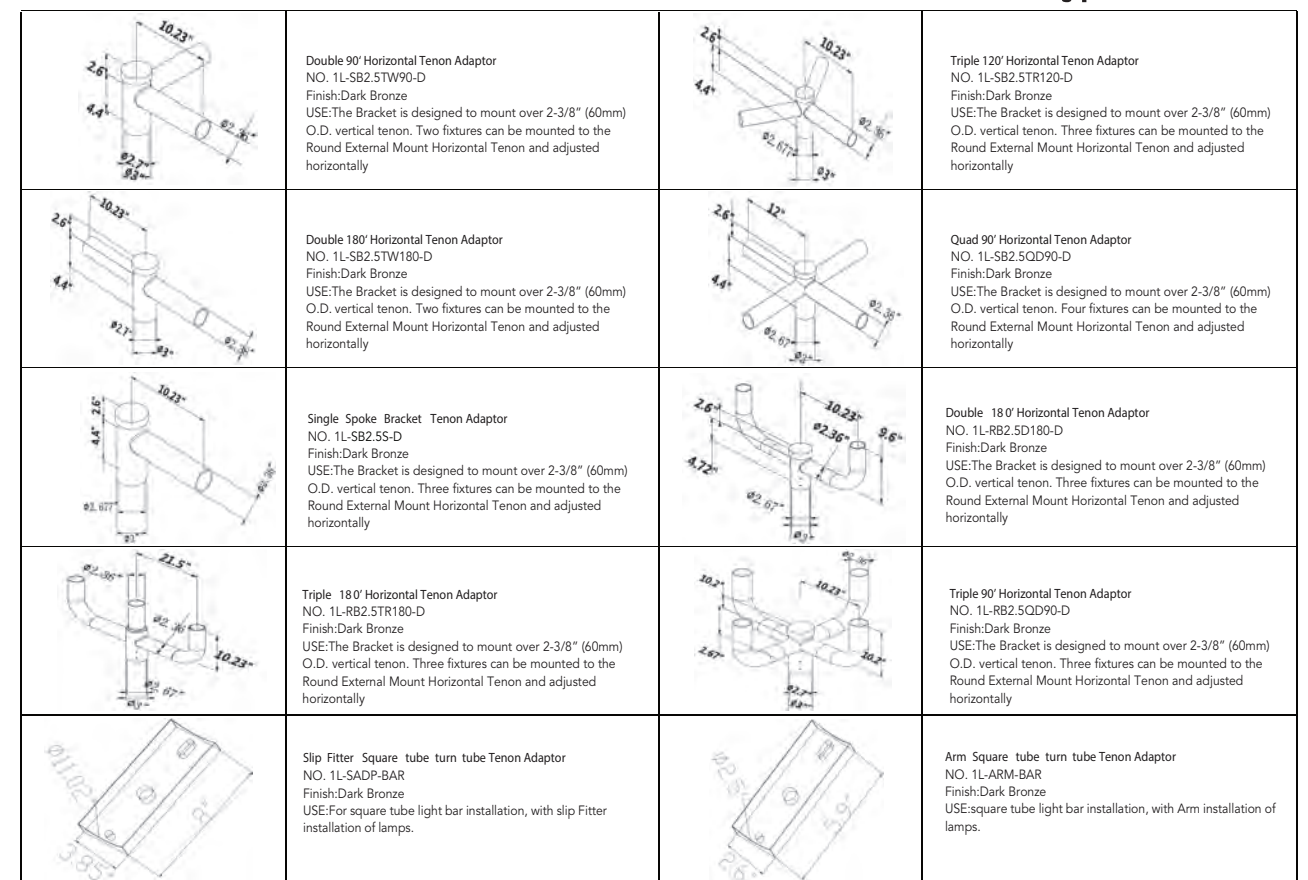
WALL BRACKET

- **Attaches to any flat surface**
- **Provides wiring access**



MID-POLE TENON BRACKET

ROUND EXTERNAL MOUNT HORIZONTAL TENON · To mount 2/3/4 fixtures on an existing pole



45W Dusk To Dawn Light



Dusk To Dawn Light

Model: 1L-45DW27-50K-Y
Power: 45W Luminous Flux: 6300LM
PF: >0.98 CRI: Ra>70

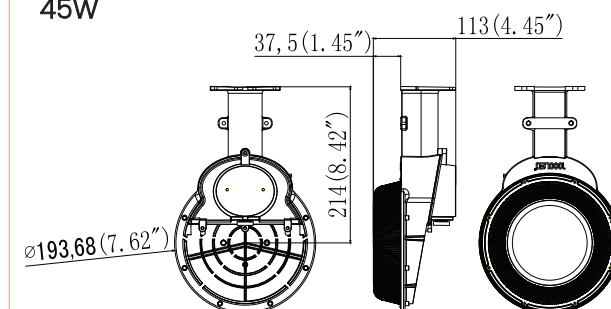
- ▶ L70: >100,000 hrs
- ▶ Input Voltage: AC120~277V
- ▶ Protection Level: Wet Location/IP66
- ▶ Lighting Angle: 124°



Dimension

Unit: inch/mm

45W



Standard

1L-45DW27-50K-Y



body

Option 1

1L-45DW27-50K-P(120-277)-A



body

+



photocell

+



adaptor
(optional)

Option 2

1L-45DW27-50K-WM-A



body

+



7 pin

+



light note

+



adaptor
(optional)



gateway

ARCHITECTURAL WALL PACK LIGHT



Wall Pack Light (Slim Adjust)

Model: 1L-45WAWP27-50K-D-P
1L-70WAWP27-50K-D-P

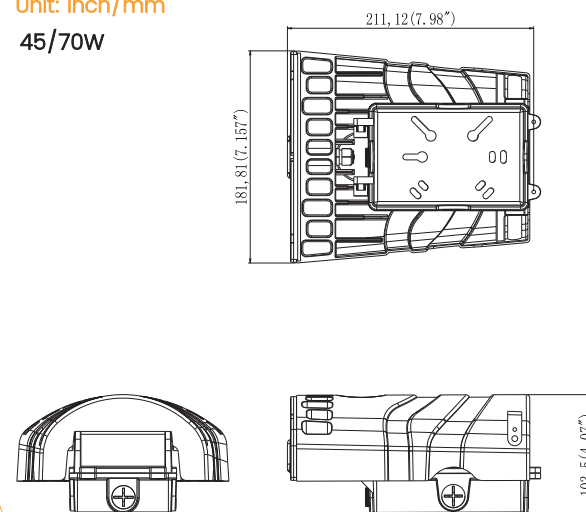
Power: 45W/70W Luminous Flux: 6741/9841LM
PF: >0.98/0.99 CRI: Ra>70

- ▶ L70: >100,000 hrs
- ▶ Input Voltage: AC120~277V
- ▶ Protection Level: Wet Location/IP66
- ▶ Lighting Angle: 74°*92°



Dimension

Unit: inch/mm
45/70W

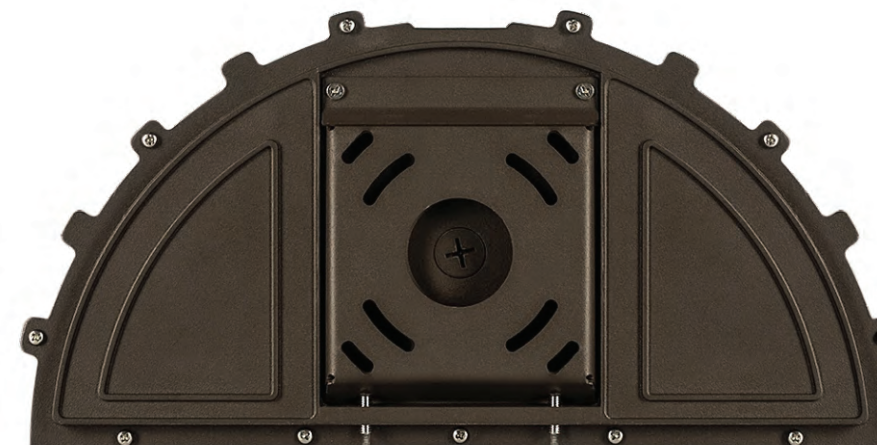


Wall Pack Light Series

Football Wall Pack



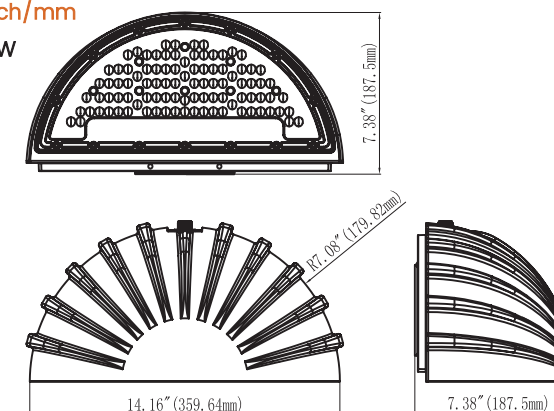
Front



Back

Dimension

Unit: inch/mm
45/70W



Wall Pack Light (Football Full cut off)

Model: 1L-45WBWP27-50K-D
1L-70WBWP27-50K-D

Power: 45W/70W Luminous Flux: 5650/8300LM
PF: >0.95 CRI: Ra>80

- ▶ L70: >100,000 hrs
- ▶ Input Voltage: AC120~277V
- ▶ Protection Level: Wet Location/IP65
- ▶ Lighting Angle: 45°*90°

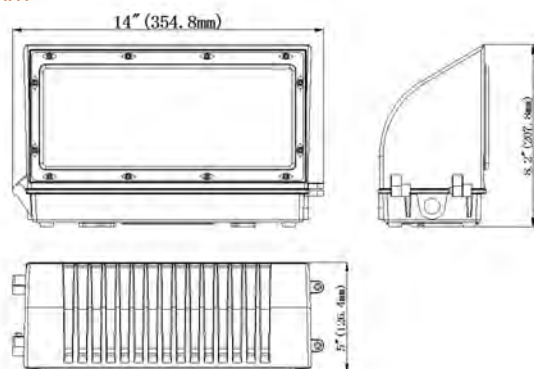


Full Cutoff Wall Packs



Dimension

Unit: inch/mm
45/70W



45/70W Full Cutoff Wall Pack Light

Model: 1L-45WFWP27-50K-D
1L-70WFWP27-50K-D

Power: 45W/70W Luminous Flux: 4800/7200LM
PF: >0.95 CRI: Ra>80

- ▶ WL: >50,000 hrs
- ▶ Input Voltage: AC120~277V Protection
- ▶ Level: Wet Location/IP65 Lighting
- ▶ Angle: 60°/90°



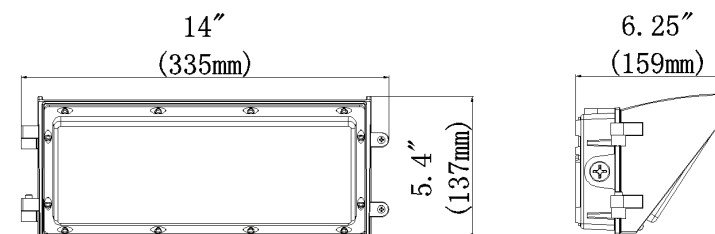
Wall Pack Light Series

Semi Cutoff Wall Packs



Dimension

Unit: inch/mm
45W



45W Semi Cutoff Wall Pack Light

Model: 1L-45WFWP27-50K-D

Power: 45W Luminous Flux: 4950LM PF: >0.95
CRI: Ra>80

- ▶ WL: >50,000 hrs
- ▶ Input Voltage: AC120~277V Protection
- ▶ Level: Wet Location/IP65 Lighting
- ▶ Angle: 60°/90°



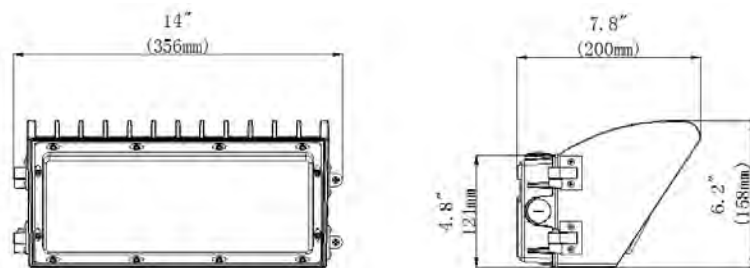
Semi Cutoff Wall Packs



Dimension

Unit: inch/mm

70W



70W Semi Cutoff Wall Pack Light

Model: 1L-HWP07W27-50K-D

Power: 45W/70W Luminous Flux: 7200LM

PF: >0.95 CRI: Ra>80

- ▶ WL: >50,000 hrs
- ▶ Input Voltage: AC120~277V Protection
- ▶ Level: Wet Location/IP65 Lighting
- ▶ Angle: 60°/90°



Wall Pack Light Series

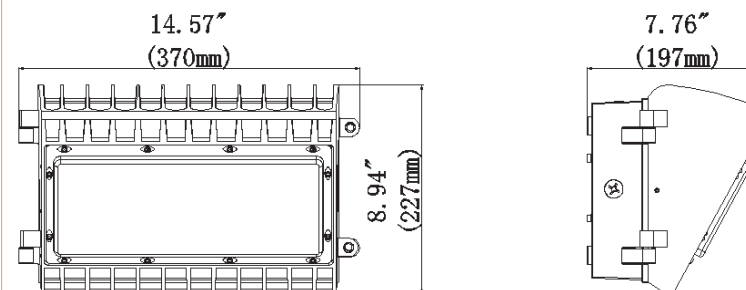
Semi Cutoff Wall Packs



Dimension

Unit: inch/mm

100/150W



100/150W Semi Cutoff Wall Pack Light

Model: 1L-HWP10W27-50K-D

1L-HWP15W27-50K-D

Power: 100W/150W Luminous Flux: 11,000/16,000LM

PF: >0.95 CRI: Ra>80

- ▶ WL: >50,000 hrs
- ▶ Input Voltage: AC120~277V Protection
- ▶ Level: Wet Location/IP65 Lighting
- ▶ Angle: 60°/90°

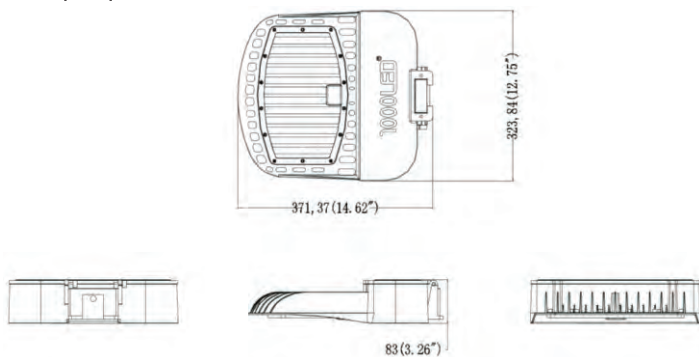


FLOOD LIGHT SERIES



Dimension

Unit: inch/mm
100/150/200W



Flood Light (Mounting Parts Option)

Model: 1L-10WFL27-50K-D
1L-15WFL27-50K-D
1L-20WFL27-50K-D

Power: 100/150/200W LF: 15381/21929/29769LM

PF: >0.99 CRI: Ra>70

- ▶ L70: >100,000 hrs
- ▶ Input Voltage: AC120~277V
- ▶ Protection Level: Wet Location/IP66
- ▶ Lighting Angle: 120°



Flood Light Series

Standard



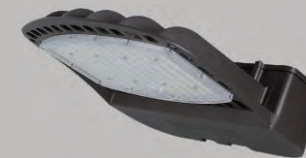
body

+



(slip fitter / arm / trunnion is optional)

Option 1



body

+

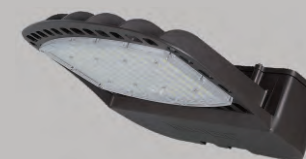


slip fitter



+ photocell

Option 2



body

+

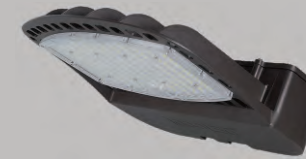


arm



+ photocell

Option 3



body

+



trunnion



+ photocell

Option 4



body

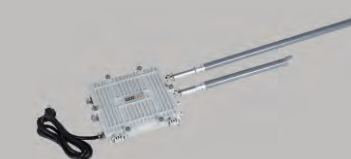
+



slip fitter

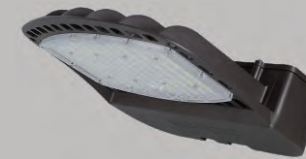


+ light node



+ gateway

Option 5



body

+



arm

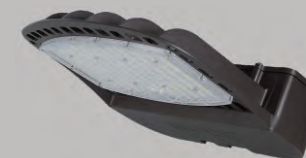


+ light node



+ gateway

Option 6



body

+



trunnion



+ light node



+ gateway

CANOPY LIGHT



Canopy Light(Round)

Model: 1L-45WCP27-50K-D-M
1L-70WCP27-50K-D-M

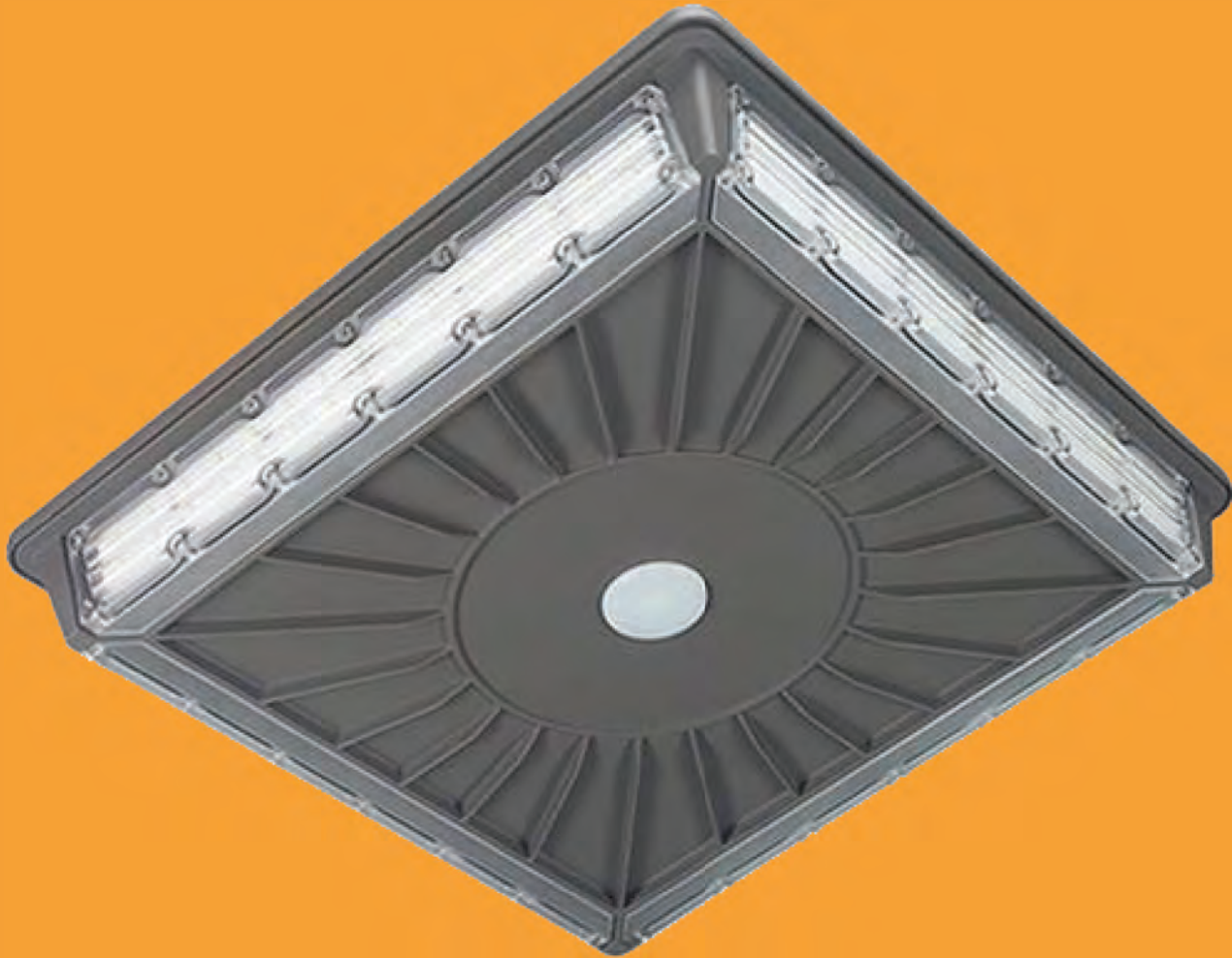
Power: 45W/70W Luminous Flux: 6300/9800LM

PF: >0.99 CRI: Ra>70

- ▶ L70: >100,000 hrs
- ▶ Input Voltage: AC120~277V
- ▶ Protection Level: Wet Location/IP66
- ▶ Lighting Angle: 145°



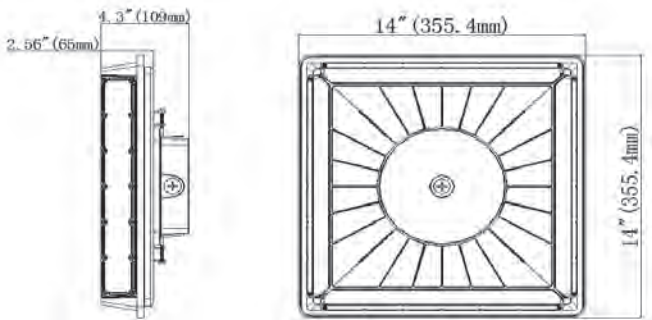
Canopy Light Series



PARKING GARAGE CANOPY

Dimension

Unit: inch/mm
45/70W



Parking Garage Canopy

Model: 1L-PGC07W27-50K-D-M
1L-PGC45W27-50K-D-M

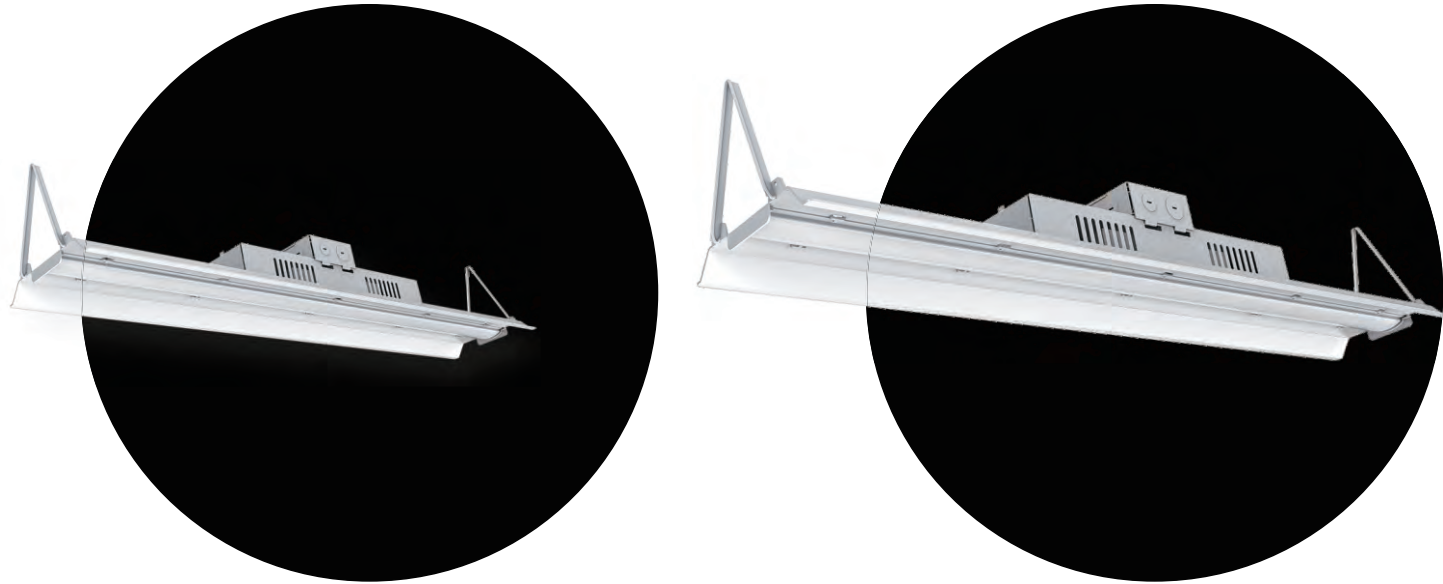
Power: 45/70W Luminous Flux: 4983/8117LM

PF: >0.95 CRI: Ra>80

- ▶ L70: >50,000 hrs
- ▶ Input Voltage: AC120~277V Protection
- ▶ Level: Wet Location/IP65
- ▶ Lighting Angle: 279°



LINEAR HIGH BAY



LED Linear High Bay (2Ft)

Model: 1L-95W2FTHB27-50K
1L-15W2FTHB27-50K

Power: 95W/150W Luminous Flux: 13362/20860LM

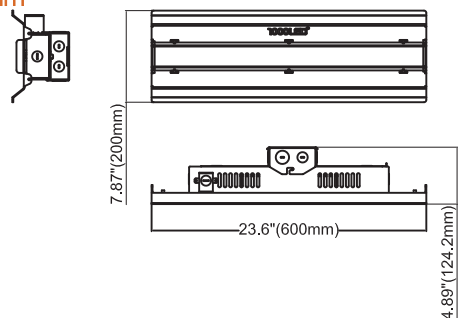
PF: >0.99 CRI: Ra>70

- ▶ L70: >100,000 hrs
- ▶ Input Voltage: AC120~277V
- ▶ Protection Level: Damp
- ▶ Lighting Angle: 110°



Dimension

Unit: inch/mm
95/150W



LED Linear High Bay (4Ft)

Model: 1L-15W4FTHB27-50K
1L-19W4FTHB27-50K
1L-30W4FTHB27-50K

Power: 150W/190W/300W Luminous Flux: 20835/27643/43017LM

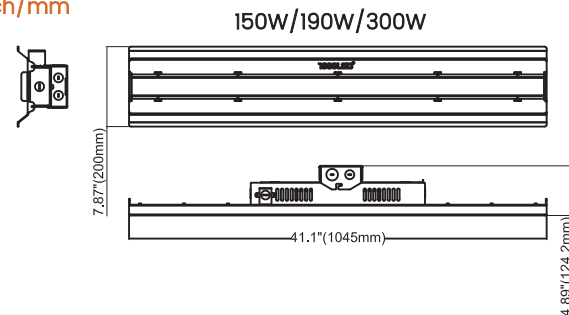
PF: >0.99 CRI: Ra>70

- ▶ L70: >100,000 hrs
- ▶ Input Voltage: AC120~277V
- ▶ Protection Level: Damp
- ▶ Lighting Angle: 110°/111°/111°

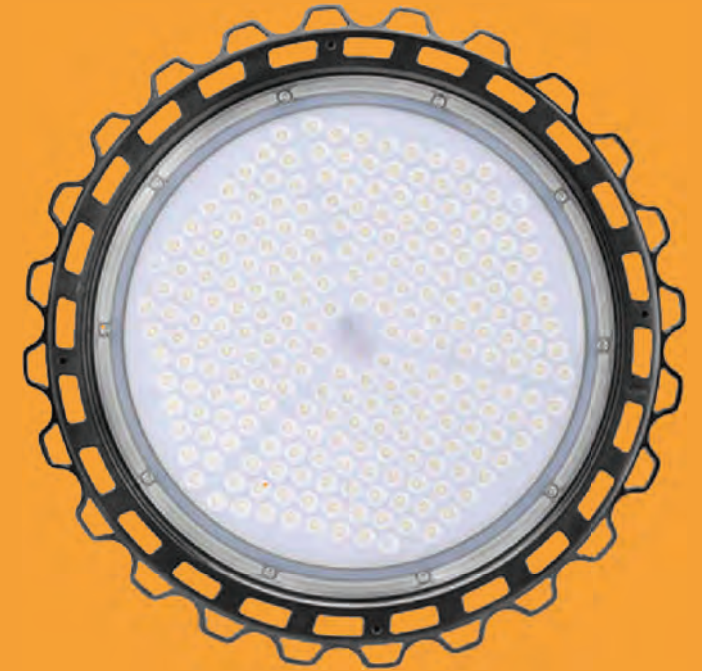


Dimension

Unit: inch/mm



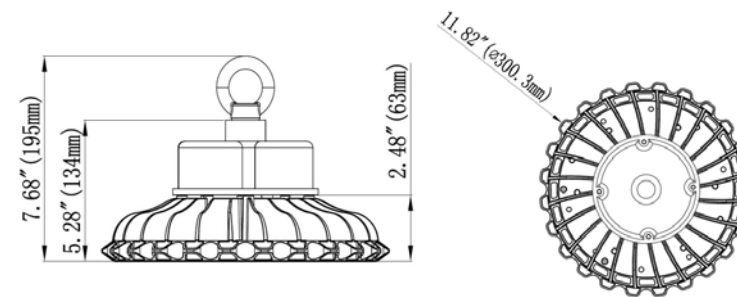
Linear & UFO High Bay Lights



UFO High Bay Lights

Dimension

Unit: inch/mm
100/150W



100/150W UFO High Bay Light

Model: 1L-UHB10W27-50K
1L-UHB15W27-50K

Power: 100/150W Luminous Flux: 13,400/18,100LM

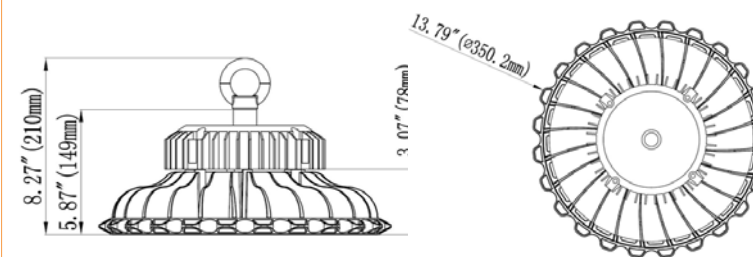
PF: >0.95 CRI: Ra>75

- ▶ WL: >50,000 hrs
- ▶ Input Voltage: AC120~277V Protection
- ▶ Level: Wet Location/IP65 Lighting
- ▶ Angle: 90°90°



Dimension

Unit: inch/mm
200W



200W UFO High Bay Light

Model: 1L-UHB20W27-50K

Power: 100W/150W Luminous Flux: 23,100LM

PF: >0.95 CRI: Ra>80

- ▶ WL: >50,000 hrs
- ▶ Input Voltage: AC100~277V Protection
- ▶ Level: Wet Location/IP65 Lighting
- ▶ Angle: 90°90°



PANEL LIGHT

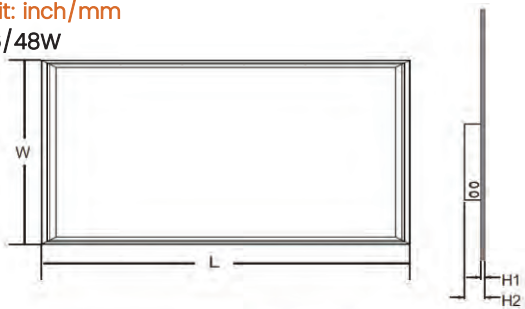


STRIP LIGHT



Dimension

Unit: inch/mm
36/48W



Part No.	Size(ft)	Outline Dimension(mm)			
		L	W	H1	H2
1L-P22FT36W	2×2 ft	603	603	12	52
1L-P14FT48W	1×4 ft	1205	300	12	52
1L-P24FT48W	2×4 ft	1205	603	12	52

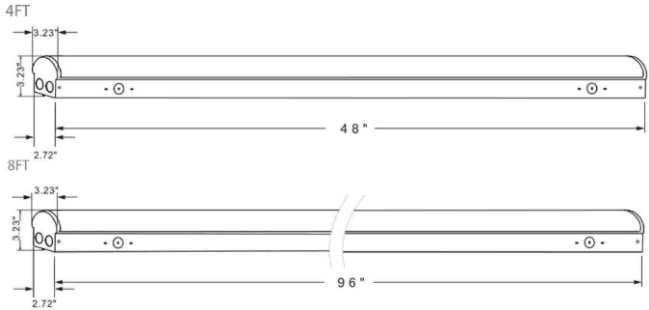
Panel Light

- Model: 1L-P22FT36W-40K
1L-P24FT48W-40K
- Power: 36W/48W Luminous Flux: 4860/6480LM
- PF: >0.95 CRI: Ra>70
- ▶ L70: >100,000 hrs
 - ▶ Input Voltage: AC120~277V
 - ▶ Protection Level: Wet Location/IP22
 - ▶ Lighting Angle: 120°



Dimension

Unit: inch/mm
24/40/64W



Size	Part No.	Power	luminous Flux	Input Voltage	PF	Ra	Beam Angle	Warranty	Certificate
4FT	DM-ST4FT24	24W	3120LM	AC100-277V	>0.9	>80	110	5 Years	cETLus&Premium
4FT	DM-ST4FT40	40W	5200LM	AC100-277V	>0.9	>80	110	5 Years	cETLus&Premium
8FT	DM-ST8FT40	40W	5200LM	AC100-277V	>0.9	>80	110	5 Years	cETLus&Premium
8FT	DM-ST8FT64	64W	8320LM	AC100-277V	>0.9	>80	110	5 Years	cETLus&Premium

Strip Light

- Model: 1L-ST4FT24
1L-ST4FT40
1L-ST8FT40
1L-ST8FT64
- Power: 24W/40W/40W/64W Luminous Flux: 3120/5200LM
5200/8320LM
- PF: >0.90 CRI: Ra>80
- ▶ L70: >100,000 hrs
 - ▶ Input Voltage: AC120~347V/480V
 - ▶ Protection Level: Wet Location
 - ▶ Lighting Angle: 110°



Notes:

Notes: