

DUSK TO DAWN LIGHT



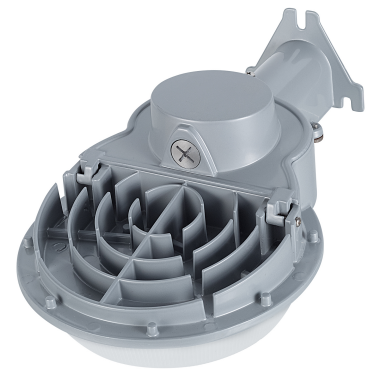
PRODUCT FEATURES:

- ❖ Optical design, greatly improved the light utilization and evenness
- ❖ High efficiency LED Driver, voltage AC120-277 ;
- ❖ Cast Aluminum design, better cooling, light quality, LED Tj < 85°C.
- ❖ Photocell Control (Optional)

MODEL #	
PROJECT:	
NOTES:	
DATE:	
PREPARED BY:	

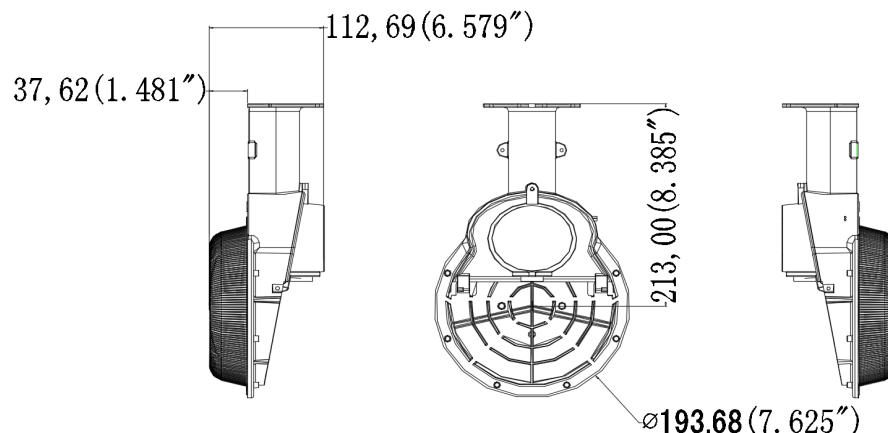
Additional Information:

- Power: 45W
- Input: AC 120-277V
- CCT : 5000K
- Output: 6539 LM
- Light Source: LUMILEDS



PRODUCT APPLICATIONS:

The 1000LED WALL PACK LED Lighting Series can be widely used for Indoor or Outdoor (Wet Location) Excellent for Museums, Art Galleries, Shopping Malls, Office Buildings, Pole/Area Lighting, Walls and many other applications



Structure Features:

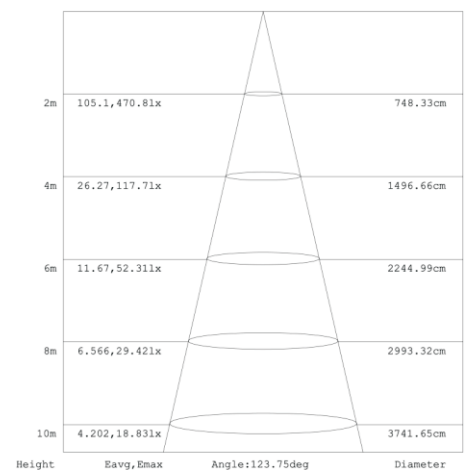
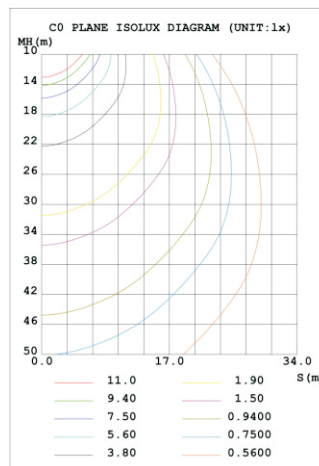
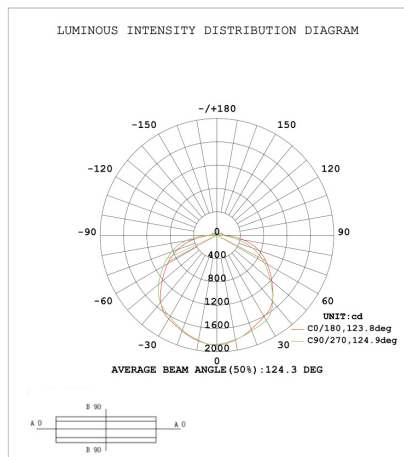
- Shell Materials: Aluminum & PC
- Finish: Dark Bronze/Silver
- Net Weight: 1.2KG (2.6 LBS)
- **Product Size: 213mm*193mm*167mm**
- **Carton Size: 750mm*520mm*336mm**

DUSK TO DAWN LIGHT

TECHNICAL PARAMETERS:

Type	1L-45WDW27-XXK-D		
Power	45W	Lighting Angle	124°
Input Voltage	AC120-277V	LED Brightness Decay	<5%/6000 hrs
PF	>0.95	Working Life	>50000 hrs
Driver Efficiency	>90%	Working Temperature	-30 - +45°C
Luminous Flux	6539 Lm	Storage Temperature	-40 - +80°C
Color Temperature	4000K/5000K	Protection Level	Wet Location/IP66
CRI	Ra>70	Cable	Input Connect, 0.3m

PHOTOMETRY:

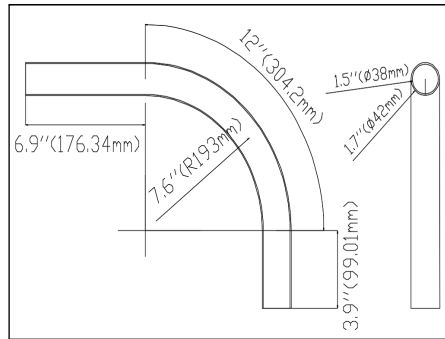


ORDERING EXAMPLE: 1L-45WDW27-XXK-Z

1L	45W	DW	27	XXK	Z	P
Company	Power	Product	Voltage	ColorTemp	FINISH	Control
1000LED	45W (45W)	DW Dusk/Dawn	27 AC120-277V	40K (4000K) 50K (5000K) ± 500K	D Dark Bronze Y Silver	P Photocell

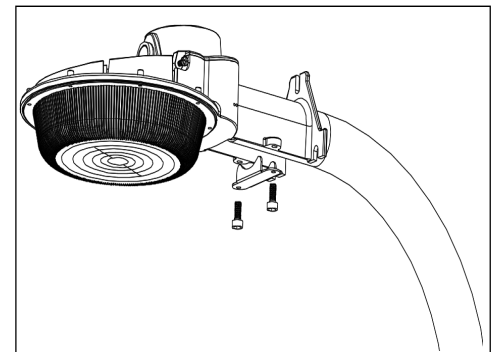
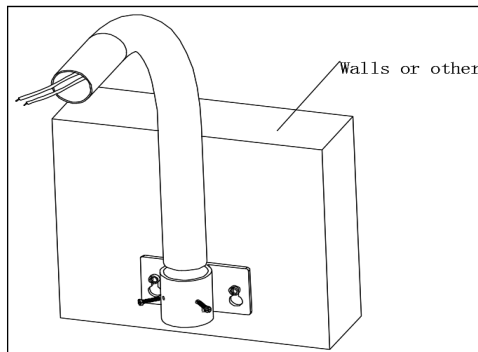
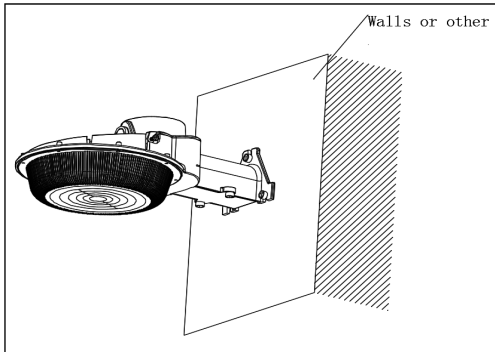
DUSK TO DAWN LIGHT

MOUNTING OPTIONS



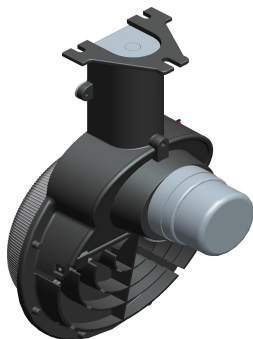
Installation pipe Mainly used for Dusk To Dawn Light 45W installation. Place the lamp on the mounting arm and lock it. Another side use of professional tools to drill two screw holes in the mounting bracket (wall or other).

MOUNTING DIMENSIONS

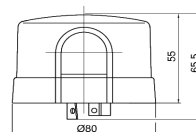


CONTROL SYSTEM

Photocell and Motion Sensor



Photocell
No. LC-10DT
Finish: Blue
USE: Used for indoor or outdoor LED lamps, working with light sensing principle, the LC-10DT sensor (LC-10DT for 120-277V or 200-480V) is used for Light sensor



- SPECIFICATIONS AND CHARACTERISTICS:**
- UL Listed, Reference No.: E178670 Volts & Cover Color
 - Blue standard for 120-277VAC (105-305VAC)
 - Turn-ON Light Level: 10-16 Lux
 - Turn ON/OFF Ratio: 1:3 to 4
 - Time Delay: 3-15 sec
 - Operating Temperature: -40°C to +70°C
 - Relay: 15A
 - MOV Surge Protection: 90J, 160J, 320J, 360J (4 options)
 - Energy Consumption: Less than 1Watt (120V<0.5W)
 - Electrical Life: >5000 cycles
 - Sensor Type: Silicon Photocell
 - Housing: UV stabilized PC
 - Failure Mode: Fail ON (standard), Fail OFF (for your option)