

## LED TROFFER LIGHTS



### PRODUCT FEATURES:

1000LED Troffer Lighting Series. With its slim design, it is the perfect LED replacement for T5 and T8 fluorescent high bays. The Troffer delivers efficient, uniform, high lumen output for low bay applications in industrial, retail and commercial interiors. This energy-efficient fixture features high-performance optics which deliver clear or whiter, brighter light while using significantly less energy when compared to traditional bay lighting.

MODEL #	
PROJECT:	
NOTES:	
DATE:	
PREPARED BY:	

### Additional Information:

- Power: 30W/45W
- Input: AC 120-277V
- CCT : 3500K/4000K/5000K
- Light Source: SEOUL
- Driver: SIMON POWER



### PRODUCT APPLICATIONS:

The 1000LED Linear High Bay LED Lighting Series can be widely used in Warehouses, Industrial Areas, Gymnasiums, Exhibition Halls, Workshops, Distribution Centers, Storage Areas, Grocery Stores, Garages, Big Box Retailers and more.

### Specifications

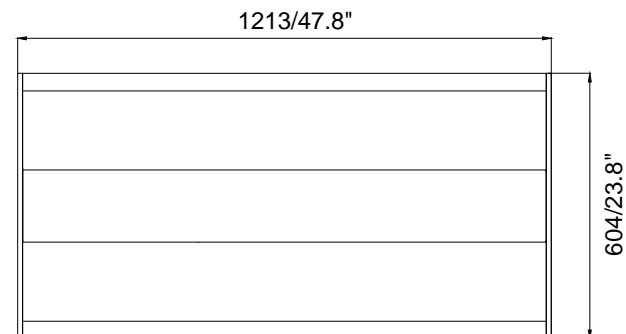
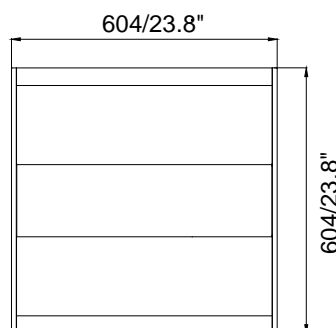
Troffer-22/24  
 Length: 604MM/1213MM(23.8"/47.8")  
 Width: 604MM(23.8")  
 Depth: 70MM(2.8")  
 Weight: 7.71/12.76(lbs)

### Packaging information

**22TRF30W-XXK:** 675MMX377MMX670MM(A case of (four)  
 26.6"X14.8"X26.4"  
**24TRF45W-XXK:** 1284MMX209MMX670MM(A case of (two)  
 50.6"X8.2"X26.4"

### Mounting

Embedded installation.

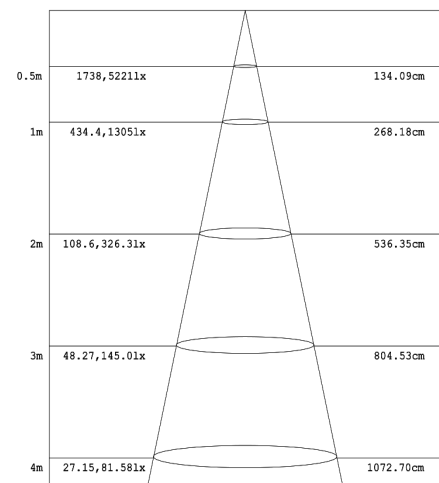
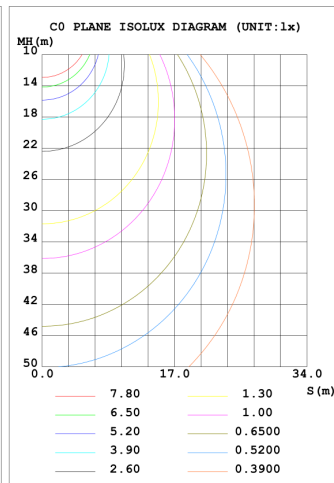
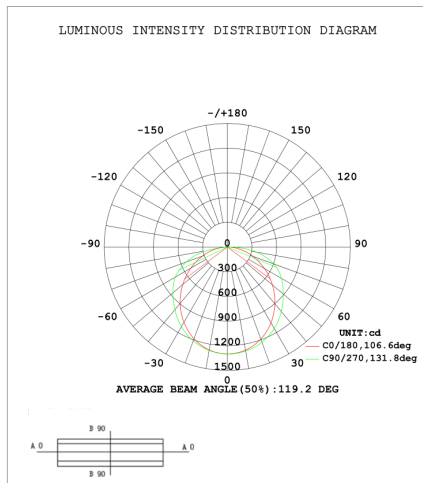


## LED TROFFER LIGHTS

### TECHNICAL PARAMETERS:

Type	22TRF30W-XXK/24TRF45W-XXK		
Power	30W/45W	Lighting Angle	119°
Input Voltage	AC120-277V	LED Brightness Decay	<5%/6000 hrs
PF	>0.98	Working Life	>75000 hrs
Driver Efficiency	>90%	Working Temperature	-20 - +50°C
Luminous Flux	3840 Lm/5715 Lm	Storage Temperature	-20 - +50°C
Color Temperature	3500K/4000K/5000K	Protection Level	Dry
CRI	Ra>80	Cable	Input Connect, No Cable

### PHOTOMETRY:



### ORDERING EXAMPLE: 22TRF30W-XXK/24TRF45W-XXK

TRF	22	30W	XXK
Product	Size	Power	ColorTemp
TRF Led Troffer Light	22 (2X2feet) 24 (2X4feet)	30W 30W(30W) 45W(45W)	40K (4000K) 50K (5000K)